

EVARD PRECISION



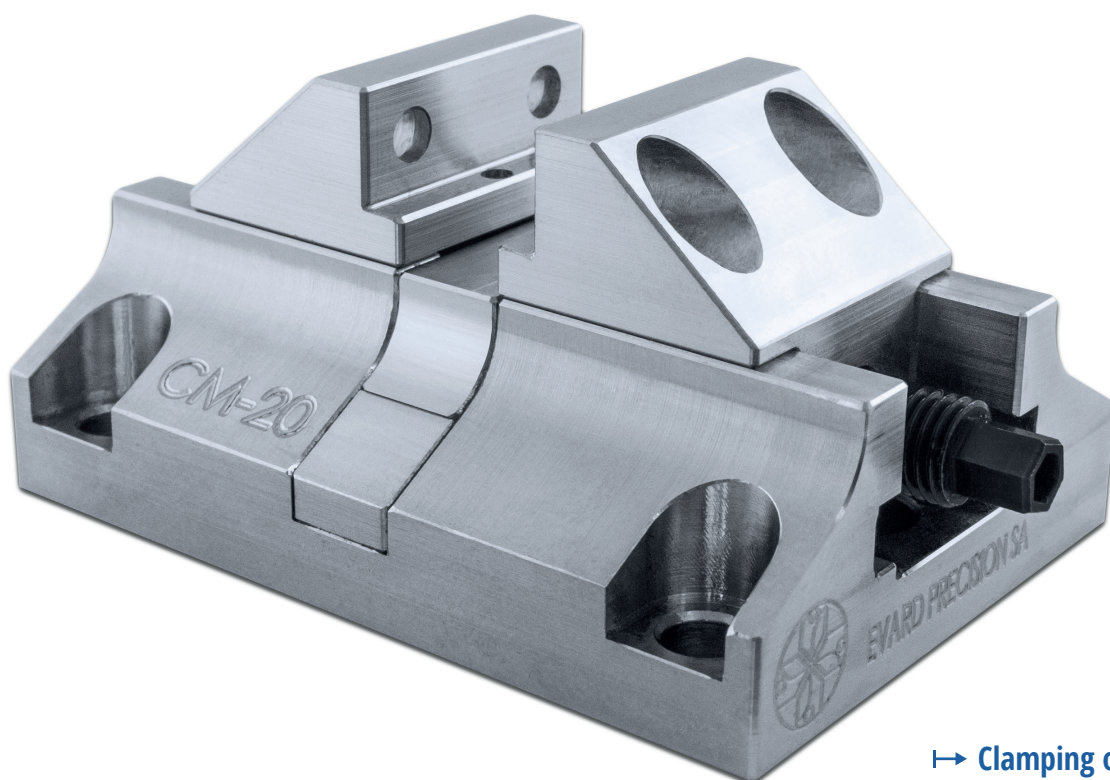
TYPE-CM 20 

## Mechanical self-centering vice

# A small vice for high precision

Characterised by a self-centering mechanical clamping, the latest addition to the CM range has been **specially designed for clamping small parts that require high precision!**

Designed for the microtechnical, watchmaking and medical fields, the CM 20 is **compact, precise** and appreciated by our customers for its **robustness!** Its light weight of 0.215 Kg makes it an ideal partner for machining centres accepting low loads on their table.



- ↳ Clamping of small parts
- ↳ High accuracy
- ↳ Self-centering
- ↳ Available in treated or stainless steel
- ↳ Resistant
- ↳ 100% Swiss made

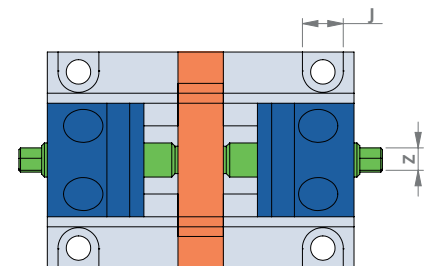
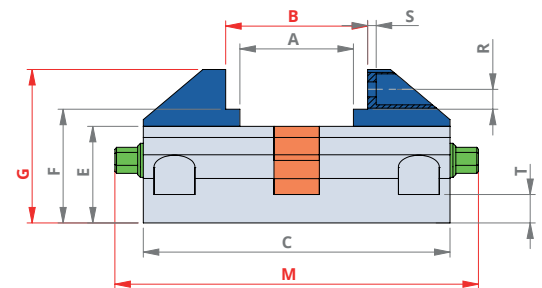
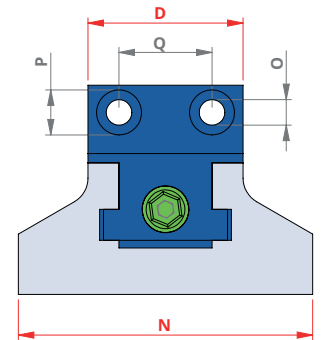
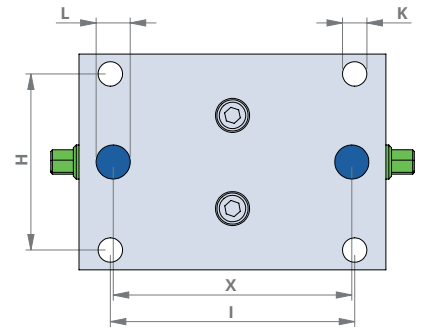
SUBJECT TO CHANGE

**Evard Précision SA**

Rue des Petits-Champs 9 • CH-1400 Yverdon-les-Bains

T (+41) 24 / 424 01 09 • F (+41) 24 / 424 01 01 • E-mail : [info@evard-precision.ch](mailto:info@evard-precision.ch) • [www.evard-precision.ch](http://www.evard-precision.ch)

Type	ref	CM 20
Maximum tightening torque	Nm	7
Weight V1	Kg	0.215
Maximum clamping opening V1	B	25
Overall length	M	64
Overall width	N	38
Overall height	G	27
Jaw width	D	20
Base length	C	54
Base height	E	17
Maximum opening between jaws	A	20
Height of bearing surface	F	20
Centre distance of the fixing (width)	H	31
Centre distance of the fixing (length)	I	43
Centre distance of the fixing ( $\pm 0.01$ )	X	42
Diameter of the mounting bores (-H7)	L	6
Diameter of the mounting holes	K	4.3
Thickness under screwheads M4	T	5
M4 screw head passage	J	7.2
M3 screw hole diameter	O	3.3
M3 screw head diameter	P	5.8
Screw centre distance M3	Q	12
Axis height of screws M3	R	3.5
Thickness under screwheads M3	S	1.5
Dimensions hexagonal screws	Z	4
Reference number	2020	



CM 20 - Clamping force

